

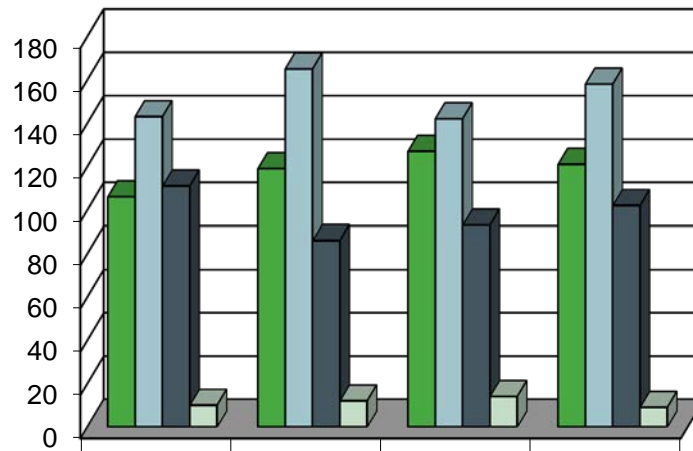
AN OVERVIEW OF OWCA SECTION'S ACTIVITY- 2015

The OWCA's fourth quarter activity report for 2015 is now available for customers to access.

1. OSHA Consultation Unit Report
2. Safety and Health Unit Report
3. Fraud Claims Unit Report
4. Hearing Unit Report
5. Second Injury Fund Unit Report

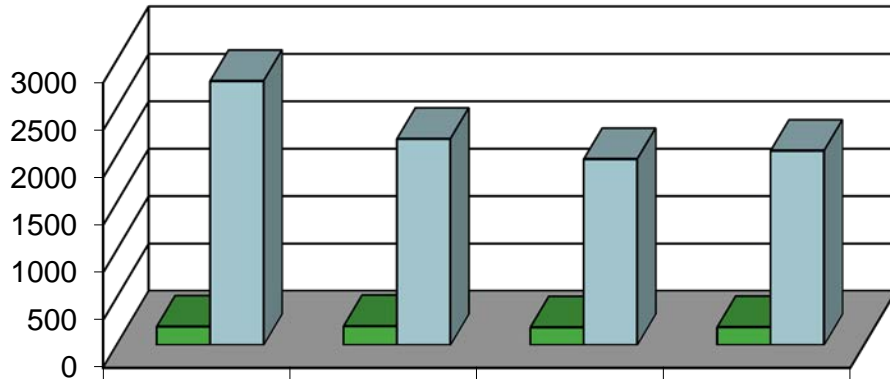
If you have questions about the information contained in this report, please contact cdesselles@lwc.la.gov.

Consultation Unit Report-2015



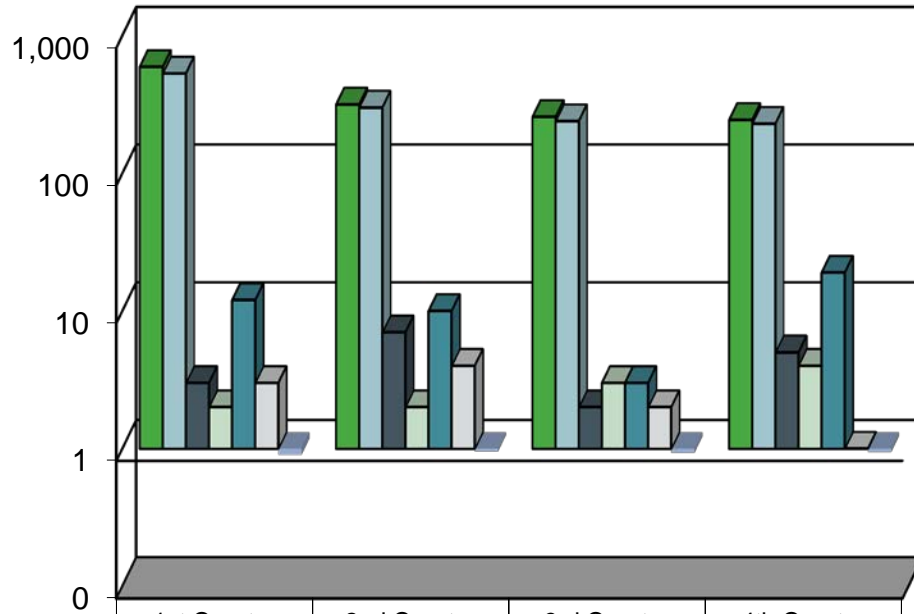
	1st Quarter	2nd Quarter	3rd Quarter	4th Quarter
■ Requests received for services *	106	119	127	121
■ Onsite visits conducted *	143	165	142	158
■ Consultation inquiries **	111	86	93	102
■ Average number of days from initial visit to case closed ***	10	12	14	9

Safety and Health Unit Report-2015



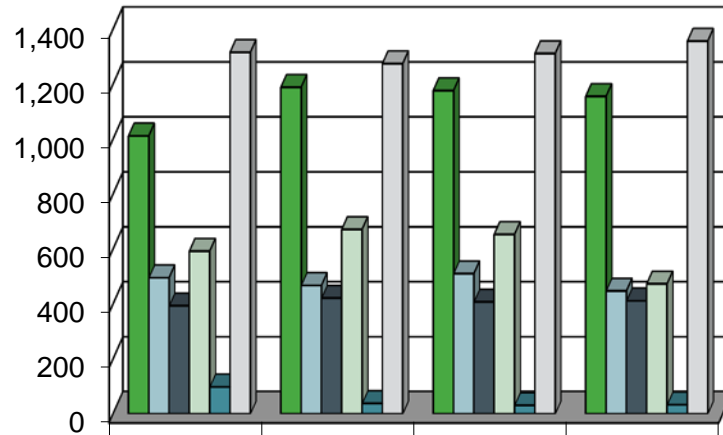
	1st Quarter	2nd Quarter	3rd Quarter	4th Quarter
Onsite visits and inspections	193	196	185	187
Clients assisted	2,781	2,171	1,957	2,045

Fraud Claims Unit Report-2015



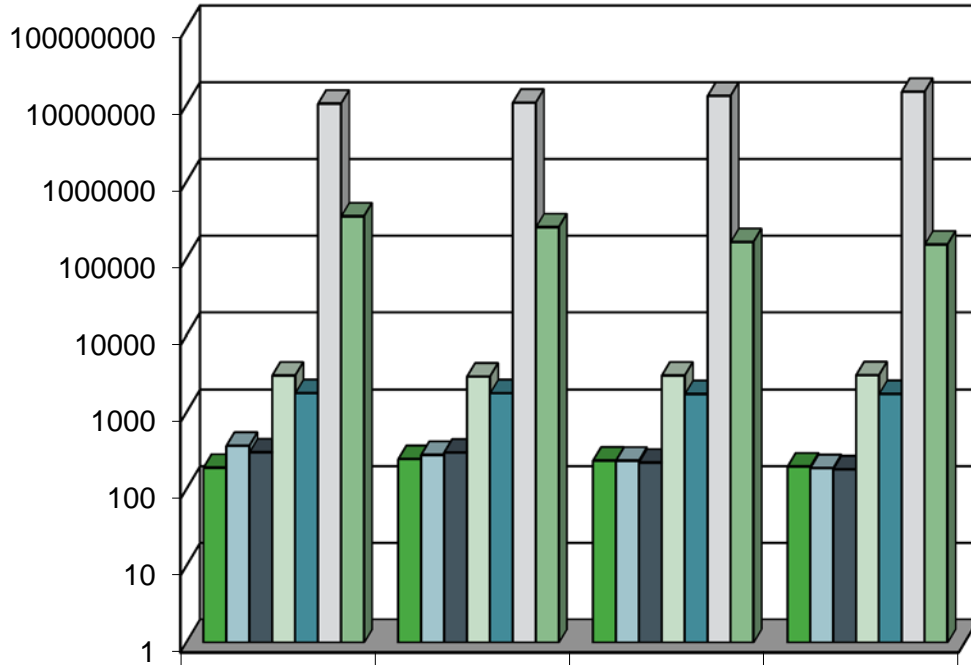
	1st Quarter	2nd Quarter	3rd Quarter	4th Quarter
Investigations initiated	593	316	257	244
Investigations completed	531	300	239	229
Referrals for prosecution	3	7	2	5
Arrests/prosecutions	2	2	3	4
Referrals for U. I. Fraud	12	10	3	19
Conviction	3	4	2	1
% of investigations completed within 30 days	90%	95%	93%	94%

Hearing Unit Report-2015



	1st Quarter	2nd Quarter	3rd Quarter	4th Quarter
■ Disputed claims filed	1,010	1,187	1,175	1,154
■ Mediations held	494	466	509	446
■ Disputes resolved before pre-trial	392	420	406	410
■ Trials held	591	670	652	472
■ Appeals filed	97	37	30	32
■ Approved settlements*	1,314	1,273	1,310	1,355

Second Injury Fund Unit Report-2015



	1st Quarter	2nd Quarter	3rd Quarter	4th Quarter
■ Claims received	191	248	237	198
■ Claims closed	370	281	236	189
■ Decisions rendered	304	301	223	182
■ Claims pending	3,043	2,952	3,042	3,071
■ Claims with ongoing reimbursements	1,796	1,791	1,746	1,751
□ Total amount reimbursed to carriers and self-insurers	\$10,456,082	\$10,768,831	\$13,199,062	\$14,929,082
■ Total administrative costs	\$355,156.00	\$256,320.00	\$164,120.00	\$152,340.00